

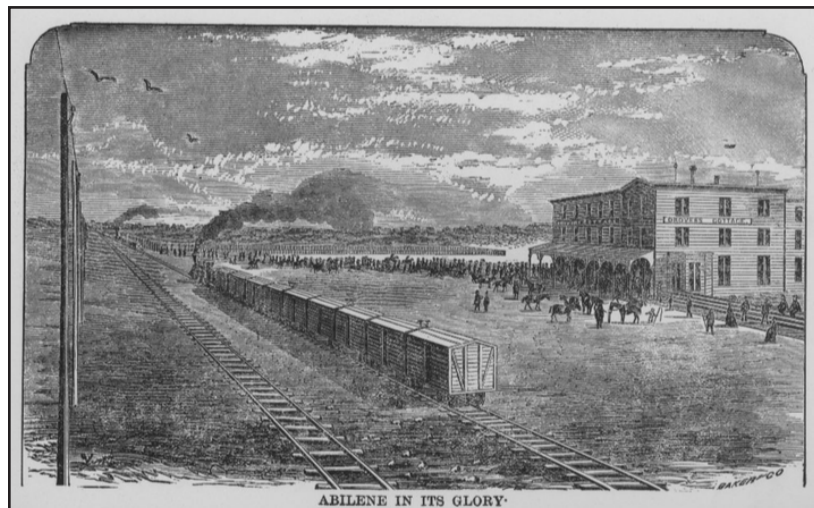


Dwight D.
Eisenhower
Memorial

NATIONAL EISENHOWER MEMORIAL EDUCATIONAL MATERIALS

LESSON

Wild West to Midwest



Duration

One 45-minute period

Grades

7-12

Cross-curriculum Application

U.S. History, Geography, Art



Historical Background

Returning to his hometown of Abilene, Kansas, in 1945 Dwight D. Eisenhower told the gathered crowd that “the proudest thing I can claim is that I am from Abilene.”

The town in which Eisenhower grew up experienced dramatic changes in the years before the arrival of Dwight Eisenhower, his brother, and his parents in 1892. And later in the 1860s and 1870s, Abilene connected cattle herds from the west with the railroad line to the east. Violence in the streets of Abilene gave the town a reputation for being a part of the “wild west.”

Over the next thirty years, however, Abilene transitioned from a rowdy trading post to a relatively quiet, stable midwestern town. This story of change can be linked to broader shifts occurring throughout the country in the latter half of the 19th century. For example, as the Eisenhowers arrived in Abilene, scholars and politicians had begun commenting on the end of westward expansion and the “closing” of the American frontier. These changes also shaped the life of Dwight Eisenhower, familiarized him with rapid social and economic change, and provided many opportunities as he grew up.

Objective

Students examine a variety of sources, including maps, photographs, and newspaper articles to learn about the historical context of Eisenhower’s boyhood home of Abilene, Kansas. How did Abilene become the kind of town that Eisenhower’s parents would choose for raising a family? How might growing up in the midwest have influenced Eisenhower? How does this transformation relate to the modernization of the United States that began during the late-19th century and accelerated in the early-20th century? How do these primary sources indicate change over time?

Using what they have learned from primary sources, students will create a poster (on paper or digitally) advertising the town of Abilene to a family such as the Eisenhowers with three small children. Students will develop a factual understanding of the past as well as demonstrate critical thinking in sourcing evidence and supporting an argument.

Essential Question

What is the significance of Eisenhower’s Kansas origins?

Primary Sources

Photographs/Illustrations of Abilene, Kansas 1865–1900:

- » “Loading Cattle at McCoys, Abilene, Kansas, 447 miles west of St. Louis, Mo.” Alexander Gardner. 1867. Library of Congress. ID: 2005684526.

<http://www.loc.gov/pictures/resource/stereo.1s00053/>

Teacher notes: The 1867 photo shows a train that will carry cattle from Abilene to markets in the East.

Interesting details:

- *Note the wide open space and lack of buildings.*
- *The fence in the background was likely part of the cattle pen.*
- *There are two pictures side by side because this photo was created for a stereoscope—a viewer that people could look into and see a 3D-like image.*

- » “Abilene in its Glory.” Baker-Co. 1874. Kansas Historical Society.

<http://www.kansasmemory.org/item/209715>

Teacher Notes: This source is a drawing of a hotel and its surroundings in downtown Abilene. Interesting details:

- *The artist placed the train in the foreground, highlighting the importance of the railroad to the town.*
- *There appears to be a large crowd of people.*
- *In the background there appears to be a fenced-in pen—perhaps the same cattle pen in the first photo.*

- » “Theodore Roosevelt Campaign stop.” 1900. Dwight D. Eisenhower Presidential Library.

Teacher Notes: This is a photo of a very crowded campaign rally in downtown Abilene for Theodore Roosevelt.

Interesting details:

- *Abilene’s development can be seen in the photo. There are many shops downtown along with power lines and telephone lines.*
- *Families with young children are visible in the photo indicating that the town was no longer a “wild west” cattle town. Early cattle towns tended to be populated mostly by young men.*

- » “Sand Springs Water.” 1900. Dwight D. Eisenhower Presidential Library.

Teacher Notes: This photo from 1900 depicts a fountain in downtown Abilene.

Interesting details:

- *Electric lights on the “Sand Springs Water” sign.*
- *Also there appear to be electric lights on the streets. Electric street lights were common in American cities by 1900 even though most homes still relied on gas lamps for lighting.*

Maps, 1859–1900

- » “Mitchell’s sectional map of Kansas.” 1859. Library of Congress.

<http://www.loc.gov/item/2005625305/>

Teacher Notes: This map shows Kansas in 1859—only nine years after Kansas became a state.

Interesting details:

- *Have students look for Dickinson County. Abilene is in Dickinson County, but the town is not listed on the map.*
- *The map does not depict all of Kansas and most western countries were established after 1860.*
- *Most of western Kansas does not appear on the map.*
- *Several large Indian reservations are present in the state.*

- » “Old Chisholm Cattle Trails.” A.W. Ziegelsch. 1873. Kansas Historical Society.

<http://www.kansasmemory.org/item/208627/>

Teacher Notes: This map shows the Old Chisholm Cattle Trail that ran from Texas to the railroad in Abilene.

Interesting details:

- *In Texas, several smaller trails fed into the Chisholm trail.*
 - *Cattle companies would drive the cattle to the railroad in Abilene and then the cattle travelled by train to a town such as Atchison, Leavenworth, or Kansas City on the Missouri River. There the cattle travelled by boat to St. Louis, a major city.*
-

- » Map of Kansas. 1884. Library of Congress.

<http://www.loc.gov/item/98688483/>

Teacher Notes: This map, created for the United States Department of Interior, shows a much more developed and populated state compared to the 1859 map.

Interesting details:

- *This map shows the entire state.*
- *All the counties have names, unlike the Mitchell's sectional map. Abilene is identified on this map, located in Dickinson County.*
- *Several railroad lines cross the state.*
- *The Pottawattomie Indian reservation in Jackson County and the Kickapoo reservation in Brown County are smaller than in 1859, while the Delaware Indian Reservation in Jefferson and Leavenworth County are no longer depicted on the map. As more and more Americans moved to western states like Kansas, the land designated for these reservations became smaller and smaller.*

- » Map of Dickinson. 1885. Library of Congress.

<http://www.loc.gov/item/2012593086/>

Teacher Notes: This 1885 map shows Dickinson County and its largest town, Abilene.

Interesting details:

- *The map shows continued development in Abilene and the surrounding area.*
- *Each plot of land is labeled with the name of the owner indicating that the county's land is being used by a variety of people.*
- *Notice the county now has two major railroad lines and there does not seem to be any reference to the Chisholm Trail indicating that cattle drives were not as important in Dickinson and Abilene compared to 1859.*

- » "Boyhood Environmental Neighborhood Home." 1900. Dwight D. Eisenhower Presidential Library.

Teacher Notes: This map shows the neighborhood in Abilene where the Eisenhower family lived. The map shows the neighborhood as it would have looked in 1900.



Interesting details:

- *The streets are laid out in a grid pattern indicating a planned town.*
- *The map has several homes labeled along with a fairground and a carnival ground implying that many families live in Abilene.*
- *Abilene had multiple schools in 1900.*
- *The map shows the creamery where Dwight's father, David, and later Dwight, worked.*

Newspaper Articles and Advertisements, 1870–1893:

- » "The Texas Cattle Trade." *Emporia News*. September 30, 1870. Library of Congress.

<http://chroniclingamerica.loc.gov/lccn/sn82016419/1870-09-30/ed-1/seq-2.pdf>

Teacher Notes: The article, "The Texas Cattle Trade," appears in the middle of the page near the top between an article entitled "The War News" and an ad for life insurance.

Interesting details:

- *The paper is printed in Emporia, Kansas—a city about 100 miles from Abilene.*
- *The article describes the cattle trade and cattle drives from Texas to Abilene including details of the route, numbers of cattle, and prices.*
- *Quote: "The magnitude of the trade, carried on in a section of the country that was until recently an uninhabitable waste, is perfectly amazing."*

- » Front page advertisements. *Abilene Reflector*. December 24, 1885. Library of Congress.

<http://chroniclingamerica.loc.gov/lccn/sn84029385/1885-12-24/ed-1/seq-1.pdf>

Teacher Notes: This source shows the front page of the Abilene Reflector, a newspaper still published in Abilene.

Interesting details:

- *By 1885 Abilene was large enough to have its own newspaper.*
- *The date is Christmas Eve.*
- *The ads feature a wide array of products—toys, books, women's clothes.*
- *These ads imply that Abilene has a sizable population of families with children.*

- » Advertisements. *Abilene Reflector*. April 6, 1893. Library of Congress.

<http://chroniclingamerica.loc.gov/lccn/sn84029386/1893-04-06/ed-1/seq-7.pdf>

Teacher Notes: Advertisements in a 1893 Abilene Reflector.

Interesting details:

- *Compared to the ads from 1885 this ad highlights more luxury items. For example, these items are jewelry, lace, and fine clothes.*



- *The ads emphasize high quality as well as low prices.*
- *The Eisenhower family lived in Abilene in 1893, and Dwight's parents, David and Ida, may have seen this very advertisement. Students might think about what goods might have interested them.*

Materials

- » Wild West to Midwest Handout
- » Supplies for creating posters—teachers may opt to have students create a physical poster or a digital poster. For ideas on creating digital posters see *Teachinghistory.org's* review of *Glogster*, a digital poster making tool. <http://teachinghistory.org/digital-classroom/tech-for-teachers/25055>.
- » Magnifying glasses (optional)

Preparation

- Print one copy of the Wild West to Midwest handout for each student.
- Print out copies of the primary source materials and group them into images, maps, and newspapers.

Procedure

1. As a class, have students consider recent changes where they live. What has changed in their area since they were younger? Are there new buildings? Buildings or places that are no longer there? What would be different if they could immediately travel back in time 30 years? Would your school still be there? Would local restaurants, parks, or sports fields still be there? List examples on the board of what would be different and what would be the same. (Alternatively, students could “go back in time” using websites like *History Pin* <<http://historypin.org>> or *What Was There?* <<http://whatwasthere.com>> to explore historical photos from their region, and see what has changed over time.)
2. Introduce Dwight Eisenhower, future general and U.S. president. Explain that his hometown of Abilene, Kansas, underwent rapid changes in the 30 years before Dwight Eisenhower and his parents moved there in 1892. Explain that by examining these changes we can better understand the dramatic changes happening in the United States between 1865



and 1900. Ask students to think along the way about how these changes to the town of Abilene provided more opportunities for Eisenhower growing up. (*Note: For example, as the town grew, new schools were established and new businesses opened providing job opportunities. In addition, as new railways and the telegraph connected Abilene with the rest of the United States, it would have provided a young person such as Dwight Eisenhower more opportunities to learn about college in general and West Point in particular.*)

3. Divide students into groups and provide each group with one type of source: images, maps, or newspapers. If available, provide each group with a magnifying glass for closer inspection.
 4. Instruct each group to place their sources in chronological order.
 5. Explain that each group will then come up with a list of specific details in the sources (evidence) that indicates change over time. Hand out the Wild West to Midwest Handout to each student. If necessary, go over the handout as a class. Point out that for each source students should record the year, the title, list important details they notice, and then circle the details that have changed over time.
 6. Come back together as a class and have each group share their results in two columns on the board: How did Abilene change? How do we know? Then ask: What changes in the town might have provided opportunities for Dwight Eisenhower as a boy? How do the different kinds of sources (maps, images, and newspapers) compare? What did students learn from each?
 7. Assignment: Eisenhower remembered his parents raising him in Abilene, Kansas, “They raised six boys and they made sure that each had an upbringing at home and an education that equipped him to gain a respectable place in his own profession, and I think it’s fair to say they all have. They and their families are the products of the loving care, labor and work of my father and mother; just another average Abilene family.” With this in mind, each student will create a poster advertising 1890s Abilene. The poster should make the town appealing to a family such as the Eisenhowers looking for a new home. In making their posters, students should use what they learned from the various sources to highlight the changes in Abilene over the preceding 30 years.
-



Differentiation

Students at lower levels of reading ability can be assigned to the photo or map group and higher level readers can be assigned to the newspaper group. For further support, student may create posters in groups.

Teachers may also make use of the Teacher Notes that accompany the above sources. Providing these notes to students may help them to notice important details within the sources.

Advanced students could compare changes in Abilene between 1860 and 1890 to another city using the *History Pin* or *What Was There?* websites. Advanced students could also explore photographs and architectural drawings of the Eisenhower home found in the Historic American Buildings Survey (HABS) that can be accessed online at the Library of Congress (see *Related Resources* below). Students could use the primary sources found online in these collections to create a presentation for the class.

Assessment

Students will be assessed on their poster and how it reflects an understanding of the primary sources and the changes that occurred in Abilene before the 1890s. In addition, students can be assessed on their group's work with primary sources. For example, did the group notice key details in the source and use them to support an interpretation?

Per the lesson plan rubric, student work on the handout and poster should demonstrate a factual understanding as well as critical thinking in using evidence to support an argument. The rubric evaluates student work in four categories: Factual Understanding, Sourcing, Evidence-Based Claim, and Presentation.

Related Resources

Lesson Plans

- » *The West—Lesson Plans*. Public Broadcasting Service.

http://www.pbs.org/weta/thewest/lesson_plans

From the website accompanying *The West*, a documentary by Ken Burns, this site features ten lesson plans related to the settlement of the American West.



Secondary Sources and Digital Resources

- » *Eisenhower, the Frontier, and the New Deal*. Timothy Rives. Eisenhower Presidential Library.

<https://www.archives.gov/publications/prologue/2015/fall/ike-frontier.pdf>

This essay details Dwight Eisenhower's background in Kansas and explains how his identity as a man of the American West shaped his career.

- » What Was There? Teachinghistory.org.

<http://teachinghistory.org/digital-classroom/tech-for-teachers/25346>

A brief post by a history teacher on ideas for incorporating the *What Was There?* <<http://whatwasthere.com>> website in the classroom. The site allows users to upload historical photographs and place their location on a map. In addition, some photos can be directly compared to the current Google street view image for the same location.

Primary Sources

- » *Kansas Memory*. Kansas State Historical Society.

<http://www.kansasmemory.org>

This web archive features a wide variety of online resources on the history of Kansas and is divided into collections by county.

- » *Chronicling America*. Library of Congress.

<http://chroniclingamerica.loc.gov>

A deep and rich repository of digitized historical newspapers from 1836 to 1922 from the Library of Congress. The collection can be searched by year and location. The site also

contains a subject guide for newspaper articles covering major historical events.

- » *Historic American Buildings Survey (HABS)*. Library of Congress.

<http://www.loc.gov/pictures/collection/hh>

This collection from the Library of Congress contains photos and architectural plans for buildings listed on the Historic American Buildings Survey. Included in the collection is Eisenhower's boyhood home in Abilene, Kansas.

- » *The Significance of the Frontier in American History*. National Humanities Center.

<http://nationalhumanitiescenter.org/pds/gilded/empire/text1/turner.pdf>

Historian Frederick Jackson Turner delivered this paper in 1893 at the World Columbian Exposition in Chicago. Turner argued that the western territories in the United States were effectively settled and the frontier of westward expansion was at an end. Further, he asserted that the frontier had shaped American history and that American ideals of democracy and individualism were based in frontier culture. This "closing" of the frontier was an important factor shaping Dwight Eisenhower's hometown of Abilene, Kansas and possibly influencing Ike.

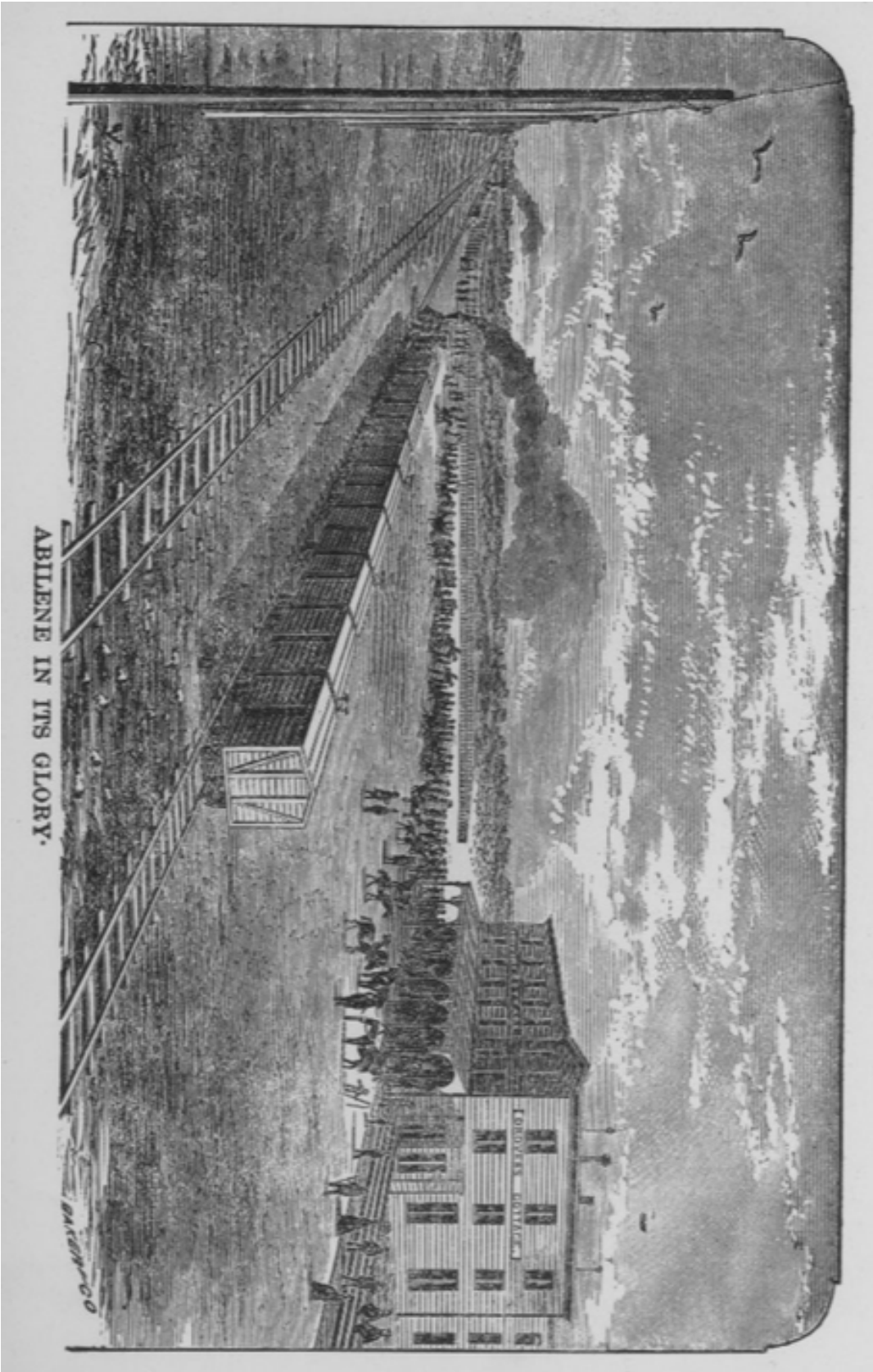


“Loading Cattle at McCoy’s, Abilene, Kansas, 447 miles west of St. Louis, Mo.” Alexander Gardner, 1867. Library of Congress.





Dwight D.
Eisenhower
Memorial



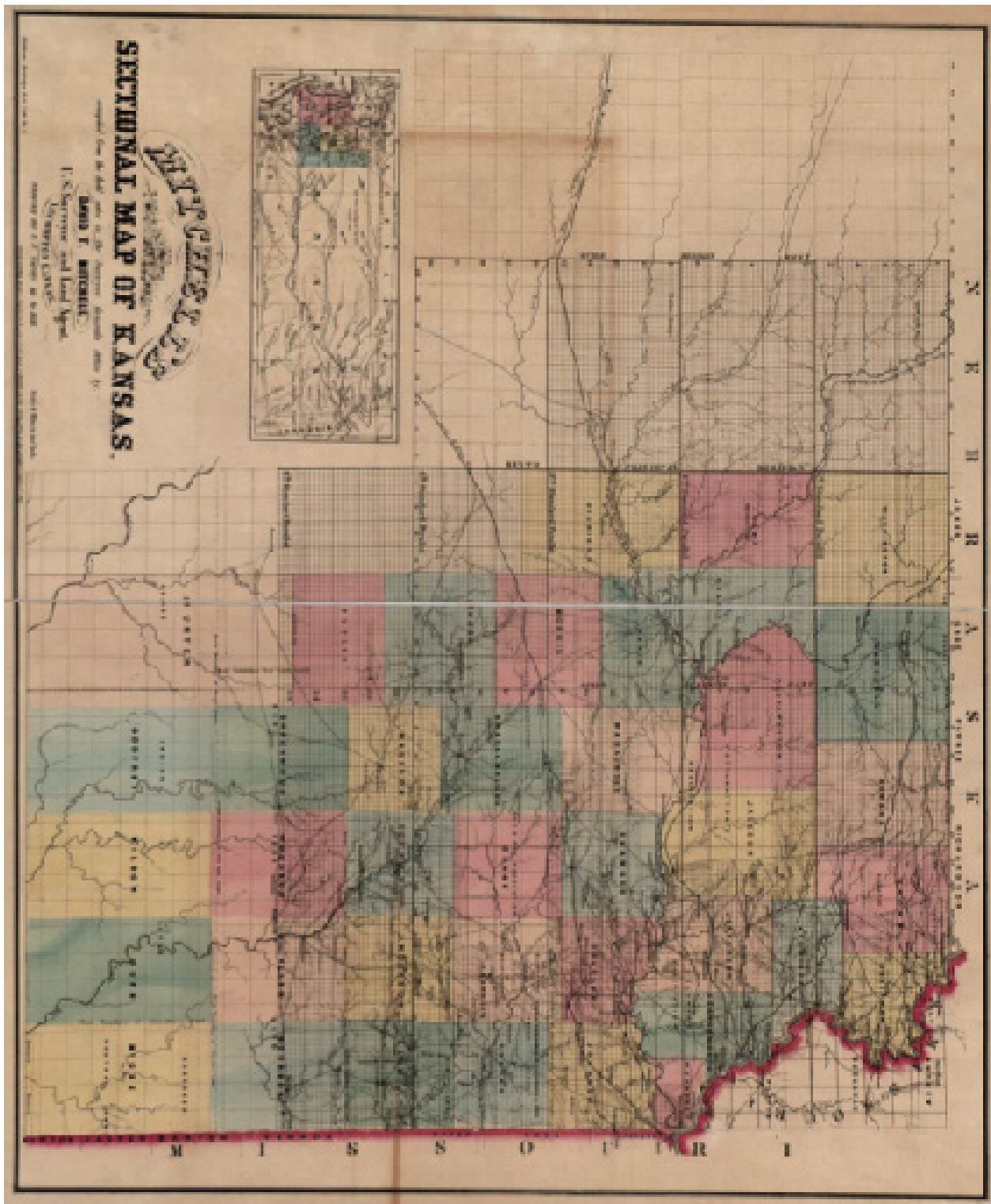
“Abilene in its Glory.” Baker-Co., 1874. Kansas Historical Society.



“Theodore Roosevelt Campaign stop,” 1900. Dwight D. Eisenhower Presidential Library.



“Sand Springs Water,” 1900. Dwight D. Eisenhower Presidential Library.



“Mitchell’s sectional map of Kansas,” 1859. Library of Congress. For further detail, visit <http://www.loc.gov/item/2005625305/>.

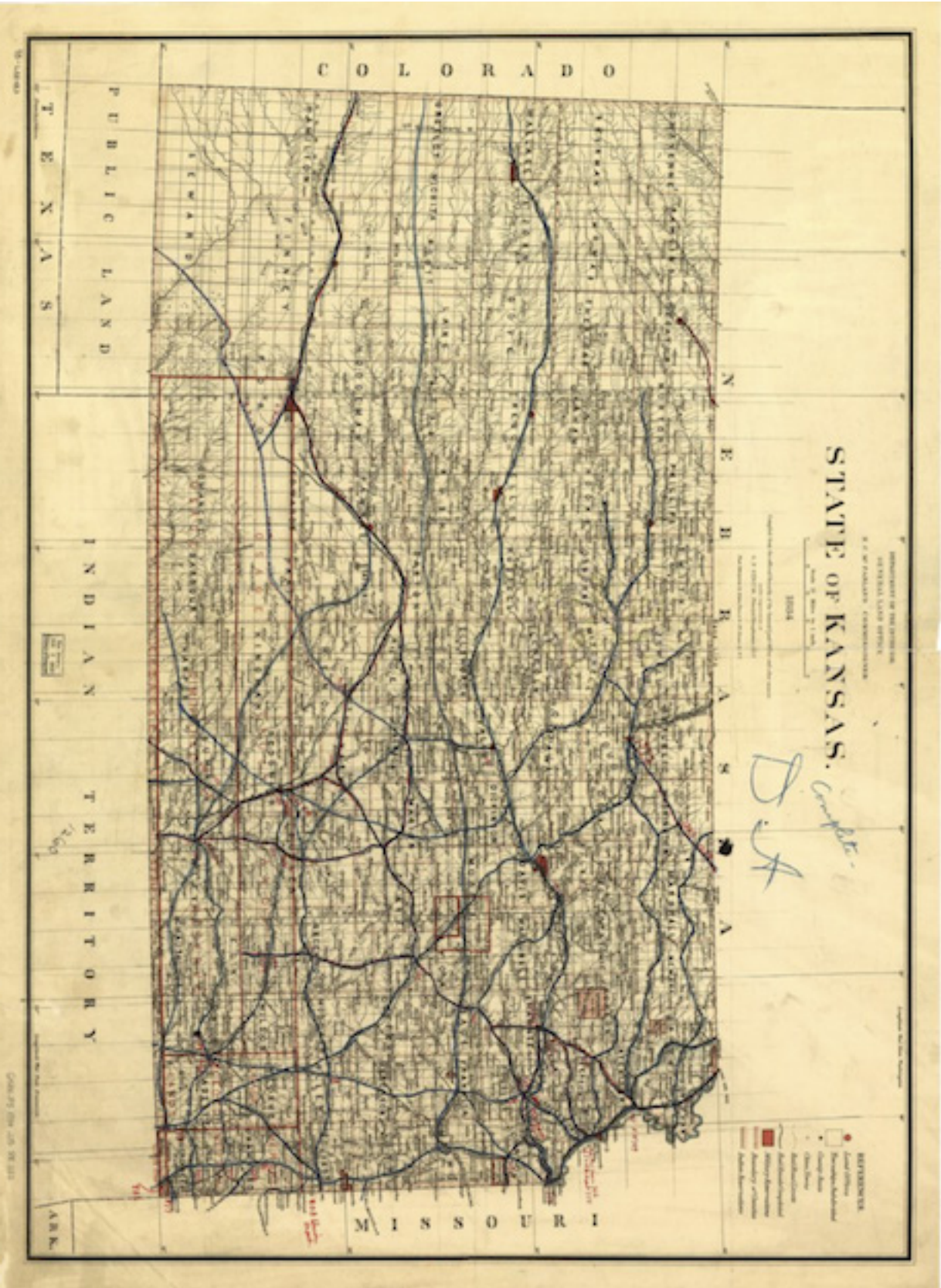


“Old Chisholm Cattle Trails.” A.W. Ziegelsch, 1873. Kansas Historical Society.





Map of Kansas, 1884. Library of Congress. For further detail, visit <http://www.loc.gov/item/986888483/>.

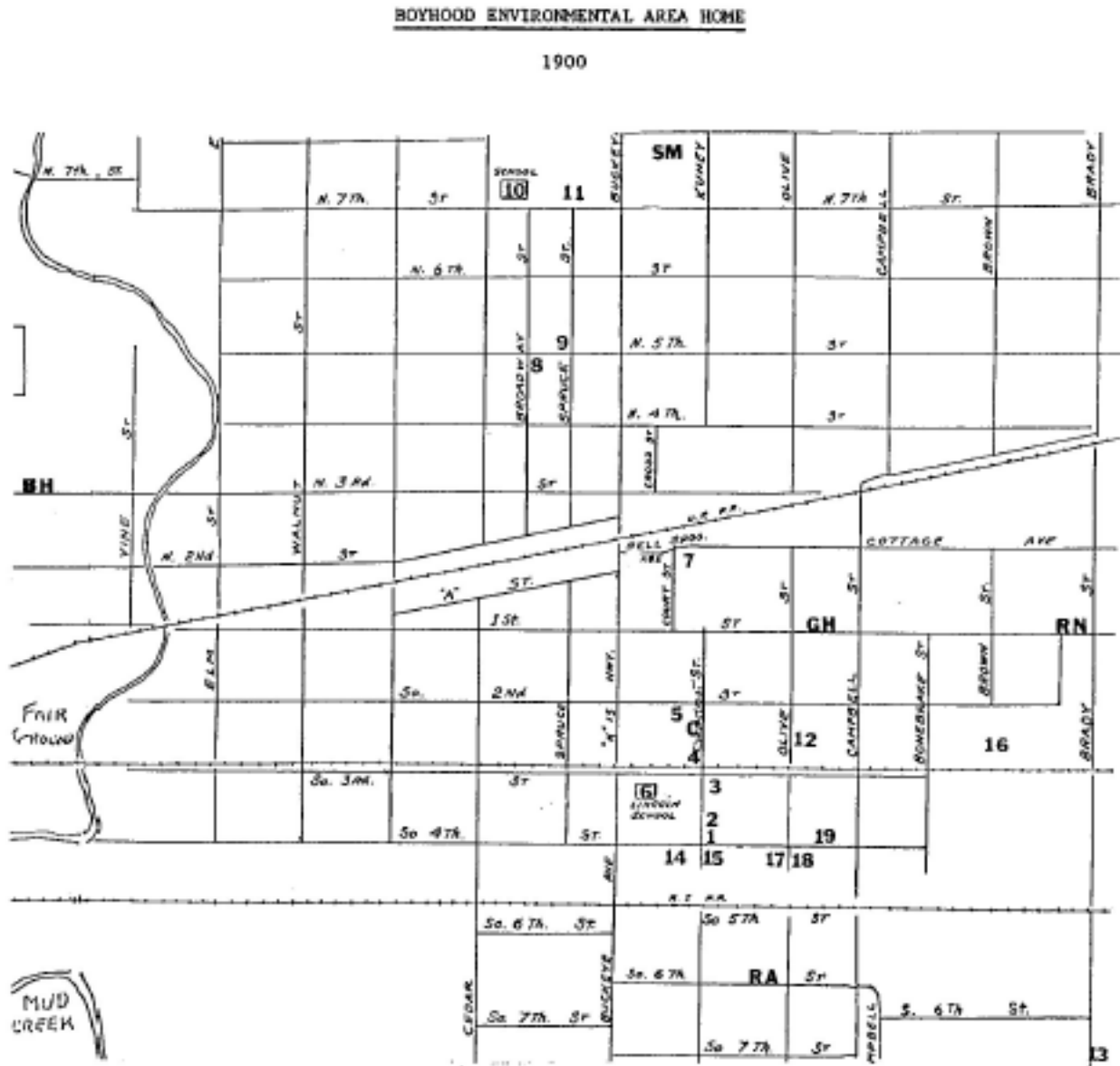


Map of Dickinson County, 1885. Library of Congress. For further detail, visit <http://www.loc.gov/item/2012593086/>.





“Boyhood Environmental Neighborhood Home,” 1900. Dwight D. Eisenhower Presidential Library.



- | | | |
|--------------------------------|-----------------------------|-------------------|
| 1. Eisenhower Home | 10. Garfield School | Red Asper-----RA |
| 2. Eisenhower Barn | 11. New High School | Curry's-----C |
| 3. Romberger House | 12. Parker Winter Quarters | Bud Huffman ---BH |
| 4. Jacob Eisenhower Home | 13. Orin Snider House | Gladys Harding GH |
| 5. First Home David | 14. Miernaster House * | Ruby Norman----RN |
| 6. Lincoln School | 15. Hiram Higgins Home* | Six McDonnell--SM |
| 7. Belle Springs Creamery | 16. Carnival grounds | |
| 8. City Hall-First High School | 17. A. A. Baxter Home * | |
| 9. Dwight-Merrifield Fight | 18. Brigette G. Grove Home* | |
| | 19. D. C. Davis * | |

* Dickinson County Title Company



“The Texas Cattle Trade,” *Emporia News*, September 30, 1870. Library of Congress.

THE TEXAS CATTLE TRADE.

The following is a condensed statement of the main facts and features of interest in the Abilene cattle trade, taken from an article recently published in the *Topeka Record*, and written, evidently by some one who knows all about the business. The magnitude of the trade, carried on in a section of the country that was recently an uninhabited waste, is perfectly amazing:

The traffic in Texas cattle has within the last few years assumed a position among the leading interests of the country.

The trade here mainly concentrates at Abilene, on the Kansas Pacific Railway, 160 miles west of the Mississippi river, 440 miles from St. Louis, and 670 miles from Chicago.

Last year about 60,000 head of cattle were shipped eastward from Abilene, within a period of some three months; and about one-third as many more were sent forward from other points in the State.

Already, since June 1st, about 37,000 have been shipped eastward from Abilene alone.

There are in the vicinity, for sale, about 35,000 head of ordinary beef and stock cattle, and several thousand cows, calves, yearlings, and two-year-olds.

The total number of cattle of all kinds, both sold and remaining on hand, at Abilene this year can safely be put down at a hundred and fifty thousand.

The cattle come principally from Northern Texas. They are bought there by the herd, at the following prices per head:

Beef cattle.....	\$11 00
Milch Cows.....	12 00
Three-years-old.....	7 00
Two-years-old.....	4 00
One-year-olds.....	2 50

The average distance driven is about 700 miles. The time consumed in driving, two months. Cost of driving, \$2 per head, exclusive of 20 per cent. risk from stampeding, stealing, etc. Most of the droves are brought through the Indian Territory, on what is known as the “Chisholm trail.” Droves are usually made up of equal numbers of grown steers, cows, and three, two or one year olds. When only beef cattle are bought, the price is put higher—say \$12 to \$14 per head.

Arriving at Abilene in good order, a mixed drove is held at about the following average figures:

Beef cattle.....	\$20 00
Milch cows.....	12 00
Three-years-old.....	7 00
Two-years-old.....	4 00
One-year-olds.....	3 00

They sell in Saint Louis and Chicago at an average of 3½ cents per pound—oftener above than below that figure. Several sales were made in Chicago last Saturday, on a dull market, at 5 cents; and a day or two before that transactions were noted at 5½ cents for 1,150 averages.

The freight from Abilene to St. Louis or Chicago (“special rates”) is \$6 to \$7 per head. Contracts are made by the car load—a car holding twenty. The freight from Abilene to New York or Boston is nearly four times as much as to St. Louis or Chicago; and there is, in addition, a 20 per cent. transportation risk, growing out of the increased extent of the route, and the greater time consumed in getting to market.

After being grazed through the summer, the same cattle are worth 20 per cent more. Beef cattle, of average flesh, ready for market, are valued at \$25.

Front page advertisements, *Abilene Reflector*, December 24, 1885. Library of Congress.

New Historical Society

~~IF WANTING A BARREN IN LUMBER AND PLASTERING MATERIAL CALL ON MILLER & THOMAS, ARTISTS, HERRING~~

THE ABILENE REFLECTOR.

VOL. 3. ABILENE, DICKINSON COUNTY, KANSAS, DEC. 24, 1885. \$50. 50

SEWELL'S
COOING BABE
AND THE MOON
Extracting Connosseurs
OF
WORDS OF ART.
FOR LADIES IN DISHES.
-BOOKS!
Think the **FRISKY KISS** while
WONDERFUL STOCK,
And receive every reader's notice. The
Gems of Poetry, Fable and Drama, selected
to equal words of art.
BOOKS, MUSIC,
Books, Mag.
Books, Chess,
Books, Poetry,
Thousands - of - Books,
with the best in every branch.

GREAT SLAUGHTER

AT
A. E. BISHOP & CO.'S
OF

<p>HOLIDAY GOODS. We have SHERRY LAMP FRAMES selected from the original and the reputation of their name is too good not to be passed up. We have selected every one a great success and profit.</p> <p>BOOKS. To the literature with a complete set of the following and more:</p> <p>85 cents. Here a full and complete edition of every illustration of the life of our countrymen, Washington, Franklin, Grant, Baker, Grant and Lincoln.</p> <p>50 cents. Every lady's wardrobe should have a pair of these. Improve the Winter Weather.</p> <p>55 cents. Improve the Winter Weather.</p> <p>60 cents. Every lady's wardrobe should have a pair of these. Improve the Winter Weather.</p> <p>Dr. 5c. and 10c. each. From Dr. J. C. Williams.</p> <p>DOLLS. We have the most complete and beautiful collection of the most famous dolls in the world. Each doll is made of the finest material and is a perfect imitation of the original.</p> <p>MISCELLANEOUS. Albums, Fancy Boxes, Photo Albums, Doll Houses and Toys for the Children, etc., etc. All at low prices and in great quantities. Satisfaction guaranteed. Money refunded if not satisfied. We do not think of stopping here at present.</p>	<p>RIBBONS. We have selected every style of ribbon for the winter season. Each ribbon is made of the finest material and is a perfect imitation of the original. We have selected every one a great success and profit.</p> <p>VELVETS. We have selected every style of velvet for the winter season. Each velvet is made of the finest material and is a perfect imitation of the original. We have selected every one a great success and profit.</p> <p>GLOVES. We have selected every style of glove for the winter season. Each glove is made of the finest material and is a perfect imitation of the original. We have selected every one a great success and profit.</p> <p>HANDKERCHIEFS. We have selected every style of handkerchief for the winter season. Each handkerchief is made of the finest material and is a perfect imitation of the original. We have selected every one a great success and profit.</p> <p>MILLINERY GOODS. We have selected every style of millinery goods for the winter season. Each millinery good is made of the finest material and is a perfect imitation of the original. We have selected every one a great success and profit.</p> <p>CLOARS. We have selected every style of cloar for the winter season. Each cloar is made of the finest material and is a perfect imitation of the original. We have selected every one a great success and profit.</p>
---	--


TOYS!
THE CHILDREN RUN TO SEWELL'S!
The Children Run to Sewell's!
The Children Run to Sewell's!

THE
PALACE DRUG STORE.

C. G. HAWK,
Proprietor.

PURE DRUGS

TOILET SOAP, STYRENE, &c.
A Full Line of England's Best Toilet Soap.
Wholesale and Retail.
Patent' Supplies, Soap, Medicine, &c., &c.
I keep a full stock of all the best
CHEAP AND GOOD.



J. H. BRADY
REAL ESTATE AND LOAN OFFICE
In the new block over the City Office is now
prepared to
LOAN MONEY
and to receive interest rates and conditions which
will be most favorable to the borrower.
REAL ESTATE PAPERS OF THE CITY
TITLES EXAMINED AND PERFECTED
CALL AND MAKE DEAL

SEWELL'S
HOLIDAY STOCK!
This holiday season when we are surrounded by
crowds of people, we have
to be open.

IT WAS IMPOSSIBLE.

100 100 100

LINES OF GOODS.
EVERY LINE FULL.
Most Complete Stock in Kansas.
—THREE STORES PACKED—
And More Goods Coming.
Every Climate Contributes,
From the North, South and West.
Richest Treasures.

ABILENE, KANSAS.

ABILENE, KANSAS.

Advertisements, *Abilene Reflector*, April 6, 1893. Library of Congress.

ABILENE WEEKLY REFLECTOR, ABILENE, KANSAS, APRIL 6, 1893

<p>CHALLENGE SALE!</p>	<p>F. L. HIRSCH & CO. The Benefit</p>	<p>G GREATEST SALE YOU'VE SEEN IN ABILENE NOW IN PROGRESS!</p>	<p>F. L. HIRSCH & CO. The Benefit</p>	<p>CHALLENGE SALE!</p>
------------------------	--	---	--	------------------------

We are wide awake and active in the field with a Spring stock of the highest quality. Our special effort for the Spring season is to increase the purchasing power of your dollar with

THE GREATEST VALUES EVER OFFERED FOR YOUR MONEY.

It will be to your interest to call and inspect our clearing display of New Arrivals and reliable standard grades in Dry Goods.

 <p>ONLY ONE MILL THE BENEFIT</p>	<p>After wandering in search of the most desirable goods in the Spring market, I was happy to find in the greatest store I have bought for every department of our household necessities and more brought to attention. By calling on us each morning and afternoon you will obtain our attention to the market.</p>	<p>Reduced Figures!</p>
---	--	--------------------------------

<p>Woolens - New Arrivals in a large and complete line of goods.</p> <p>Woolen - New Arrivals in a large and complete line of goods.</p> <p>Woolen - New Arrivals in a large and complete line of goods.</p> <p>Woolen - New Arrivals in a large and complete line of goods.</p> <p>Woolen - New Arrivals in a large and complete line of goods.</p> <p>Woolen - New Arrivals in a large and complete line of goods.</p> <p>Woolen - New Arrivals in a large and complete line of goods.</p> <p>Woolen - New Arrivals in a large and complete line of goods.</p> <p>Woolen - New Arrivals in a large and complete line of goods.</p>	<p>Woolens - New Arrivals in a large and complete line of goods.</p> <p>Woolen - New Arrivals in a large and complete line of goods.</p> <p>Woolen - New Arrivals in a large and complete line of goods.</p> <p>Woolen - New Arrivals in a large and complete line of goods.</p> <p>Woolen - New Arrivals in a large and complete line of goods.</p> <p>Woolen - New Arrivals in a large and complete line of goods.</p> <p>Woolen - New Arrivals in a large and complete line of goods.</p> <p>Woolen - New Arrivals in a large and complete line of goods.</p>	<p>Woolens - New Arrivals in a large and complete line of goods.</p> <p>Woolen - New Arrivals in a large and complete line of goods.</p> <p>Woolen - New Arrivals in a large and complete line of goods.</p> <p>Woolen - New Arrivals in a large and complete line of goods.</p> <p>Woolen - New Arrivals in a large and complete line of goods.</p> <p>Woolen - New Arrivals in a large and complete line of goods.</p> <p>Woolen - New Arrivals in a large and complete line of goods.</p> <p>Woolen - New Arrivals in a large and complete line of goods.</p>
---	--	--

CLOTHING

We are ready for Spring business. Our stock is in, complete in every department—Clothing, Furnishing Goods, Hats, Caps, Trunks, Valises, Etc., Etc. With the latest and most up-to-date styles in a system, we shall offer you our pattern for everybody else a chance to get the spring season of '93 to meet their purchases from the largest and finest stock ever had down in Abilene and at the lowest prices.

<p>Woolens - New Arrivals in a large and complete line of goods.</p> <p>Woolen - New Arrivals in a large and complete line of goods.</p> <p>Woolen - New Arrivals in a large and complete line of goods.</p> <p>Woolen - New Arrivals in a large and complete line of goods.</p> <p>Woolen - New Arrivals in a large and complete line of goods.</p> <p>Woolen - New Arrivals in a large and complete line of goods.</p> <p>Woolen - New Arrivals in a large and complete line of goods.</p> <p>Woolen - New Arrivals in a large and complete line of goods.</p>	<p>Woolens - New Arrivals in a large and complete line of goods.</p> <p>Woolen - New Arrivals in a large and complete line of goods.</p> <p>Woolen - New Arrivals in a large and complete line of goods.</p> <p>Woolen - New Arrivals in a large and complete line of goods.</p> <p>Woolen - New Arrivals in a large and complete line of goods.</p> <p>Woolen - New Arrivals in a large and complete line of goods.</p> <p>Woolen - New Arrivals in a large and complete line of goods.</p> <p>Woolen - New Arrivals in a large and complete line of goods.</p>	<p>Woolens - New Arrivals in a large and complete line of goods.</p> <p>Woolen - New Arrivals in a large and complete line of goods.</p> <p>Woolen - New Arrivals in a large and complete line of goods.</p> <p>Woolen - New Arrivals in a large and complete line of goods.</p> <p>Woolen - New Arrivals in a large and complete line of goods.</p> <p>Woolen - New Arrivals in a large and complete line of goods.</p> <p>Woolen - New Arrivals in a large and complete line of goods.</p> <p>Woolen - New Arrivals in a large and complete line of goods.</p>
--	--	--

We now extend our special invitation to visit a Wonderful Clothing in new and beautiful goods of unsurpassed merit in quality and style. **SPRING'S LATEST NEW** on every high article in their entire stock. We will please you in the direction as you were never pleased before. **WORTH WHILE TO VISIT** the immense storehouse in this new line of Men's and Boy's Clothing, Hats, Caps, Furnishing Goods, etc.

F. L. HIRSCH & CO. **THE BENEFIT.**

WE LEAD BUT NEVER FOLLOW.



Wild West to Midwest Handout

Introduction: Dwight Eisenhower, future general and U.S. president, grew up in Abilene, Kansas, where his family moved in 1892 when Dwight was two. Before the Eisenhowers arrived, this town had changed in many ways. A wild west cattle town in the 1860s, Abilene became a prosperous midwestern town by the 1890s when the Eisenhower family selected it for their new home.

Directions: Place your sources in order from earliest to latest. Examine the sources carefully as you fill out this sheet.

Source Type (image, map, or newspaper):

	Source 1	Source 2
Year		
Title (or brief description)		
Observe: 1. What details do you notice? 2. Circle the ones that demonstrate change over time.		



Wild West to Midwest Handout cont.

	Source 3	Source 4
Year		
Title (or brief description)		
Observe: 1. What details do you notice? 2. Circle the ones that demonstrate change over time.		

What change in Abilene do you think mattered most to the Eisenhower family? Defend your answer.

Wild West Rubric

	Fully Meets Expectations	Minimally Meets Expectations	Not Yet Within Expectations
	<i>3 points</i>	<i>2 points</i>	<i>1 point</i>
Factual Understanding	The poster demonstrates understanding of the main idea of each source (or piece of evidence) and identifies its key details	The poster demonstrates understanding of the main idea of each source (or piece of evidence) but does not identify key details.	The poster does not demonstrate understanding of the main idea of each source (or piece of evidence).
Sourcing	The poster demonstrates understanding of each source's origin: especially when it was created and the creator's goal.	The poster demonstrates partial understanding of each source's origin: when it was created and the creator's goal.	The poster demonstrates insufficient understanding of each source's origin: when it was created and the creator's goal.
Evidence-Based Claim	The poster makes a reasonable claim advertising for Abilene and uses appropriate sources and evidence to support that claim.	The poster makes a reasonable claim advertising for Abilene but the sources and evidence only partially support that claim.	The poster makes a claim advertising for Abilene that is not supported by appropriate sources and evidence.
Presentation	The poster is well-organized and clear with an attractive layout. No (or only minor) spelling and grammar errors.	Poster is somewhat disorganized and unclear. Layout detracts from message. Several spelling and grammar mistakes.	Poster shows little or no organization. Unclear or confusing layout. Repeated major spelling and grammar errors.